

Steel Plywood /Sheathing Clip

Fast and easy - just slip over the sheathing edge.
Eliminates unreliable wood blocking. For installation,
use the same clip as plywood thickness.

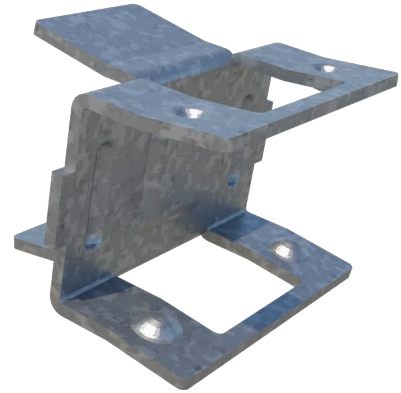
MATERIAL SPECIFICATIONS

Gauge: 20ga (33mil)

Design Thickness: 0.0346 inches

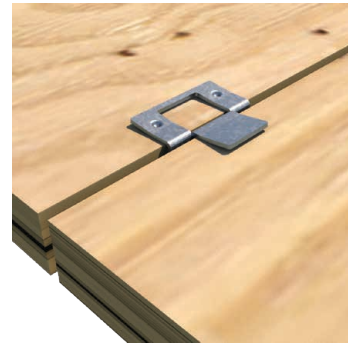
Coating: G90 (Z275) hot-dipped galvanized coating

Yield Strength: Structural Grade 50 Type H (ST50H), 50ksi (340 MPa)



Steel Plywood /Sheathing Clip (CDPC)

Product Code	Material
CDPC38	3/8"
CDPC716	7/16"
CDPC12	1/2"
CDPC58	5/8"
CDPC34	3/4"
CDPC1532	15/32"



Steel Plywood/Sheathing Clips
Installation